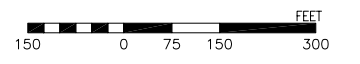
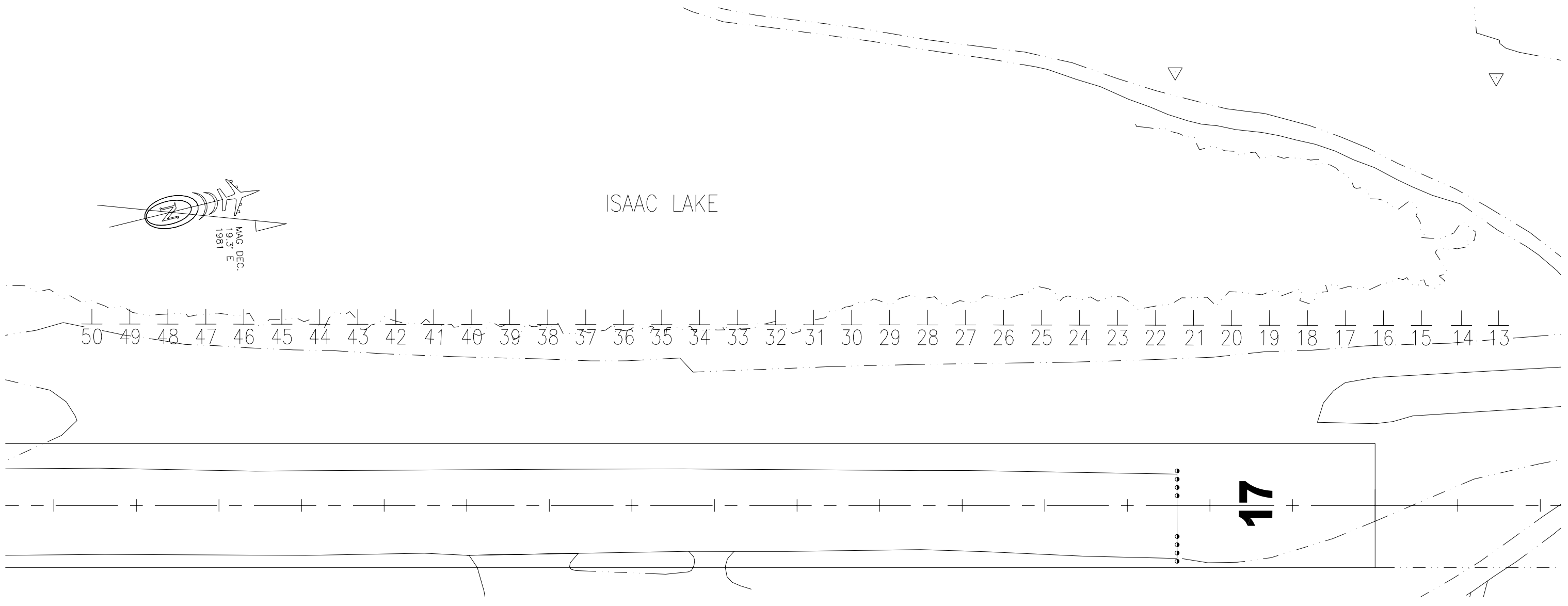


ISAAC LAKE



STATE OF ALASKA DEPARTMENT OF TRANSPORTATION AND PUBLIC FACILITIES AVIATION LEASING AND AIRPORT LAND DEVELOPEMENT		
KOTZEBUE AIRPORT TIEDOWN PLAN		
APPROVED		
PAMELA A. LEWIS		CHIEF, AVIATION LEASING
SCALE 1" = 150'	DWN CP DATE 8/1/07	SHEET 2 OF 2

U:\Av\1ALP\KOTZEBUE\KOTZ1-tiedown2 Wed, 06/Feb/08 11:27am