



## GLACIER HIGHWAY IMPROVEMENT PROJECTS

GLACIER HIGHWAY AND BACK LOOP ROAD  
Intersection Safety Improvements (Project # 69003)  
FRITZ COVE ROAD TO SEAVIEW AVENUE  
(Project #NH-0933(39)/68471)

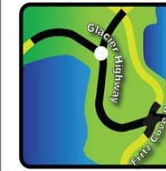


# GLACIER HIGHWAY IMPROVEMENT PROJECTS





# Meeting Purpose



**GLACIER  
HIGHWAY  
IMPROVEMENT  
PROJECTS**

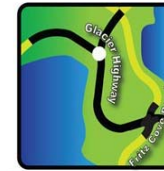
The purpose of this meeting is to present the current planned improvements, answer questions, and take your comments.

Your feedback will help us shape the design.



**USKH**

# Projects' Purpose



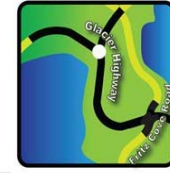
**GLACIER  
HIGHWAY  
IMPROVEMENT  
PROJECTS**

- Provide for future traffic growth
- Improve safety for vehicles, pedestrians and bicyclists



**USKH**

# What's included?



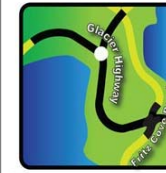
## GLACIER HIGHWAY IMPROVEMENT PROJECTS

- 6' sidewalks on both sides of the road
- 8' shoulders on both sides of the road
- Center turn lane from Back Loop Road to Seaview Avenue
- Left turn lane at Auke Bay Lab
- Improved lighting
- Intersection improvements at Fritz Cove Road and Back Loop Road

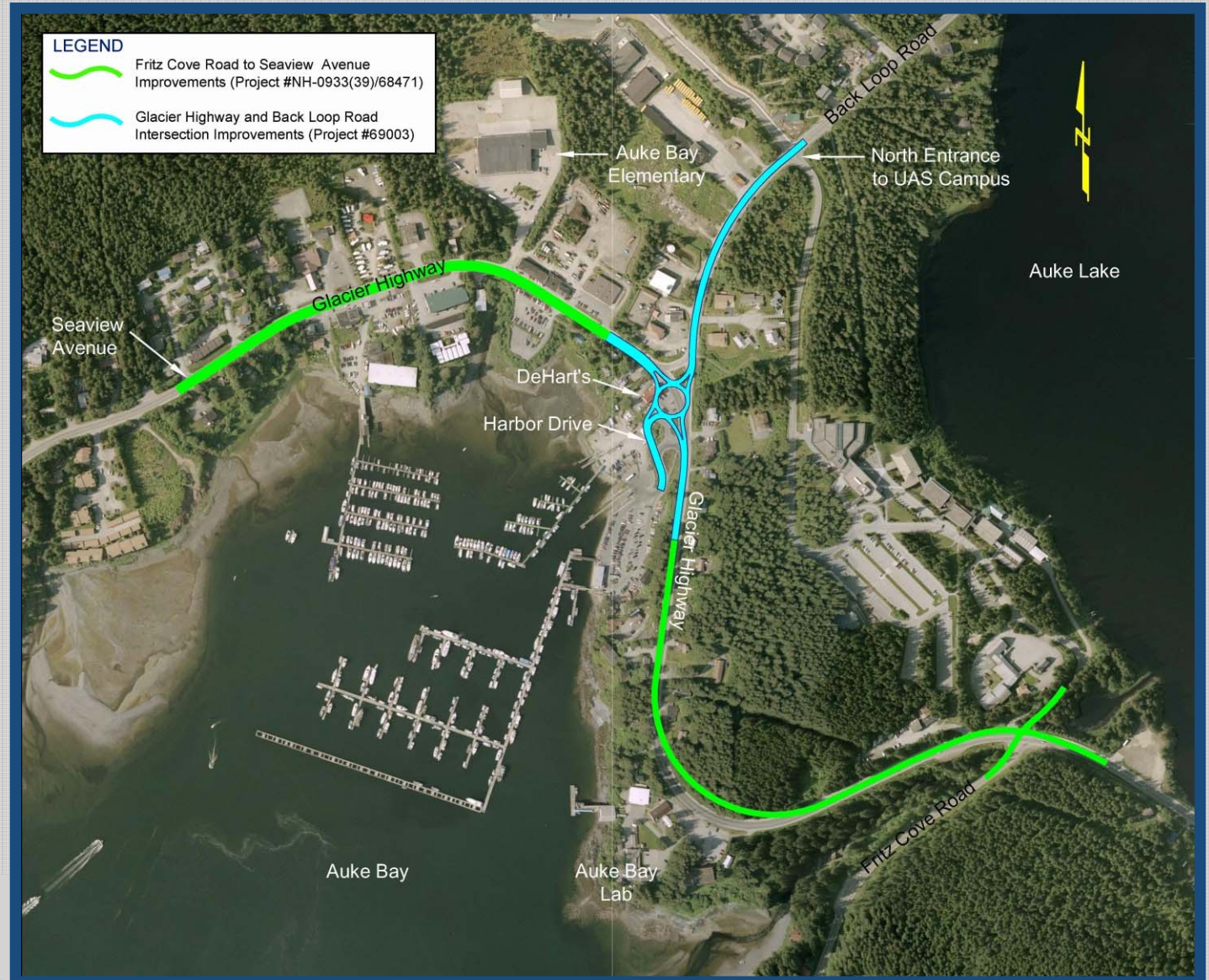




# Two Projects



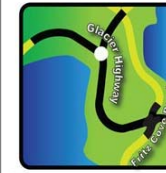
## GLACIER HIGHWAY IMPROVEMENT PROJECTS



USKH



# Environmental Review Process



**GLACIER  
HIGHWAY  
IMPROVEMENT  
PROJECTS**

- ▶ **National Environmental Policy Act (NEPA)**
  - Federally funded projects
  - Potential impacts to the environment
  - Process for coordination with public and agencies
  
- ▶ **State Project Environmental Form**
  - DOT&PF projects with state funds
  - Evaluates same environmental factors as NEPA
  - Process is less complicated



**USKH**

# Environmental Review – NEPA



GLACIER  
HIGHWAY

MENT

Your input is appreciated!

- Auke Bay Elementary traffic
- Auke Bay Lab curve
- Roundabout at Fritz Cove

## ▶ Scoping

- Introduced project
- Gathered ideas/information from public and agencies
- Developed, refined range of alternatives

## ▶ Alternatives

- Evaluated different project options
- Present proposed improvements
- Solicit comments from public and agencies

## ▶ Environmental Documents

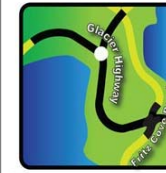
- Analyze environmental effects of alternatives
- Describe proposed improvements, dismissed alternatives
- Permits



USKH



# Environmental Review – NEPA



**GLACIER  
HIGHWAY  
IMPROVEMENT  
PROJECTS**

## ▶ Scoping

- Introduced project
- Gathered ideas/information from
- Developed, refined range of alternatives

Your input is wanted!

- Design refinement
- Impact assessment

## ▶ Alternatives

- Evaluated different project options
- Present proposed improvements
- Solicit comments from public and agencies

## ▶ Environmental Documents

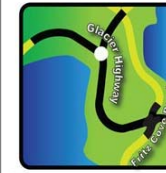
- Analyze environmental effects of alternatives
- Describe proposed improvements, dismissed alternatives
- Permits



**USKH**



# Environmental Review – NEPA



**GLACIER  
HIGHWAY  
IMPROVEMENT  
PROJECTS**

## ▶ Scoping

- Introduced project
- Gathered ideas/information from public and agencies
- Developed, refined range of

## ▶ Alternatives

- Evaluated different project
- Present proposed improvements
- Solicit comments from public and agencies

Documentation of how community's feedback was incorporated in the project development.

## ▶ Environmental Documents

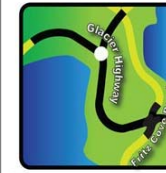
- Analyze environmental effects of alternatives
- Describe proposed improvements, dismissed alternatives
- Permits



**USKH**



# Environmental Review Process



**GLACIER  
HIGHWAY  
IMPROVEMENT  
PROJECTS**

- ▶ What environmental factors are considered?



**Wetlands**



**Fish**



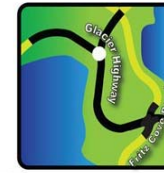
**Human Health**



**Cultural/Historical Resources**



# What we heard....



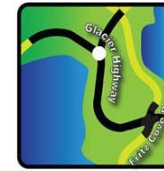
**GLACIER  
HIGHWAY  
IMPROVEMENT  
PROJECTS**

- ▶ Mixed support for roundabouts
- ▶ Support for pedestrian improvements
- ▶ Concern about right of way needed for realignment of Auke Lab curve
- ▶ Concern about grade of Back Loop Road
- ▶ Desire to improve circulation at school



**USKH**

# What we've been up to



**GLACIER  
HIGHWAY  
IMPROVEMENT  
PROJECTS**

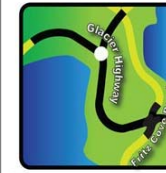
- ▶ Updated traffic projections
- ▶ Evaluated alternatives to roundabout at Fritz Cove Road intersection
- ▶ Reexamined Auke Bay Lab curve
- ▶ Considered realignment of Back Loop Roundabout
- ▶ Extended Fritz Cove Road to Seaview Avenue project limits
- ▶ Working with affected property owners



**USKH**



# Fritz Cove Road Intersection



GLACIER  
HIGHWAY  
IMPROVEMENT  
PROJECTS



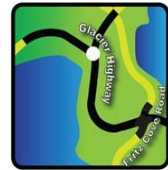
- ▶ What are the problems?
  - Less than desirable sight distance
  - Exceeds DOT standards for delay



USKH



# Fritz Cove Road Intersection



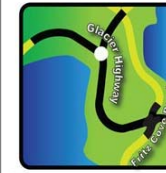
**GLACIER  
HIGHWAY  
IMPROVEMENT  
PROJECTS**



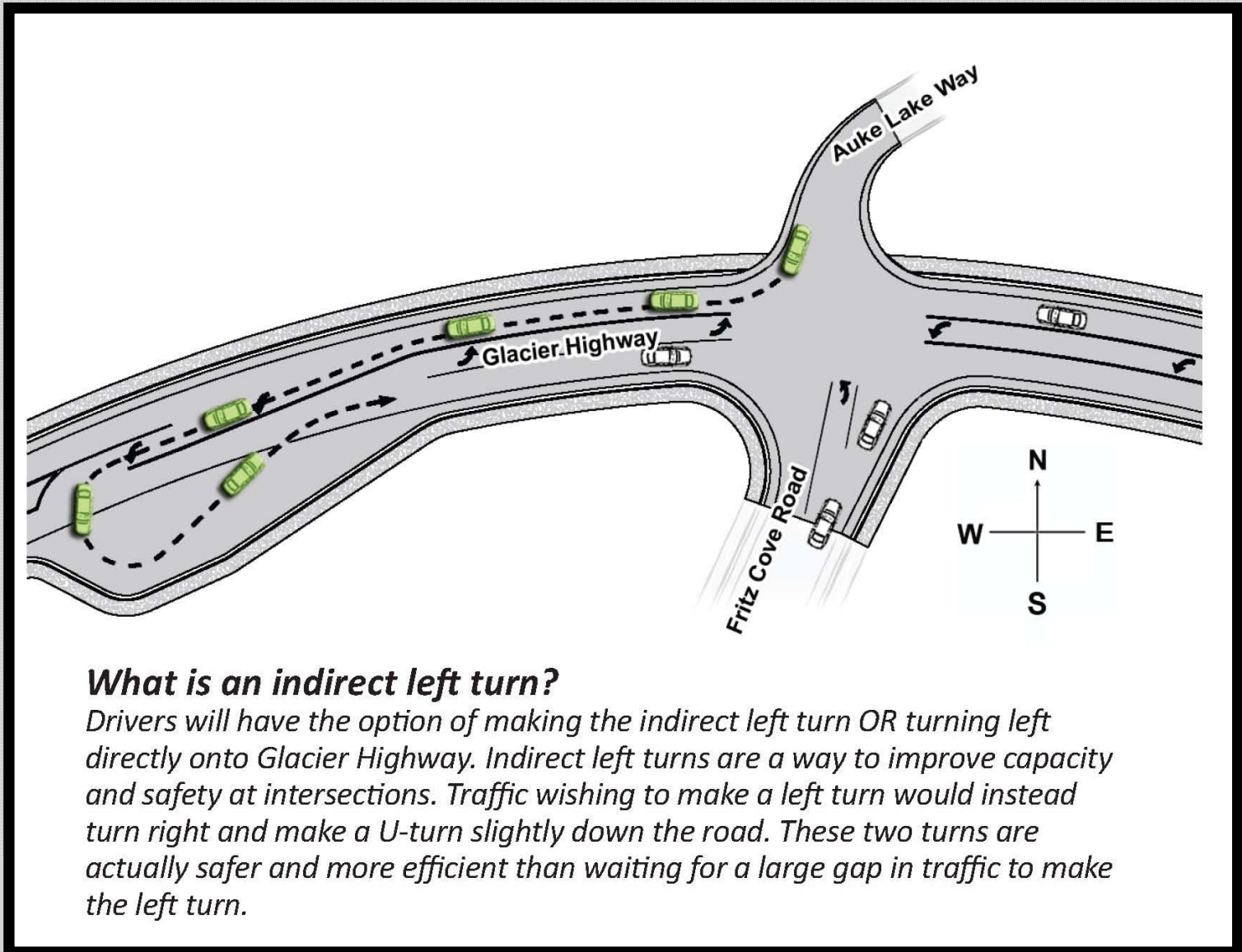
**USKH**



# Fritz Cove Intersection



**GLACIER  
HIGHWAY  
IMPROVEMENT  
PROJECTS**



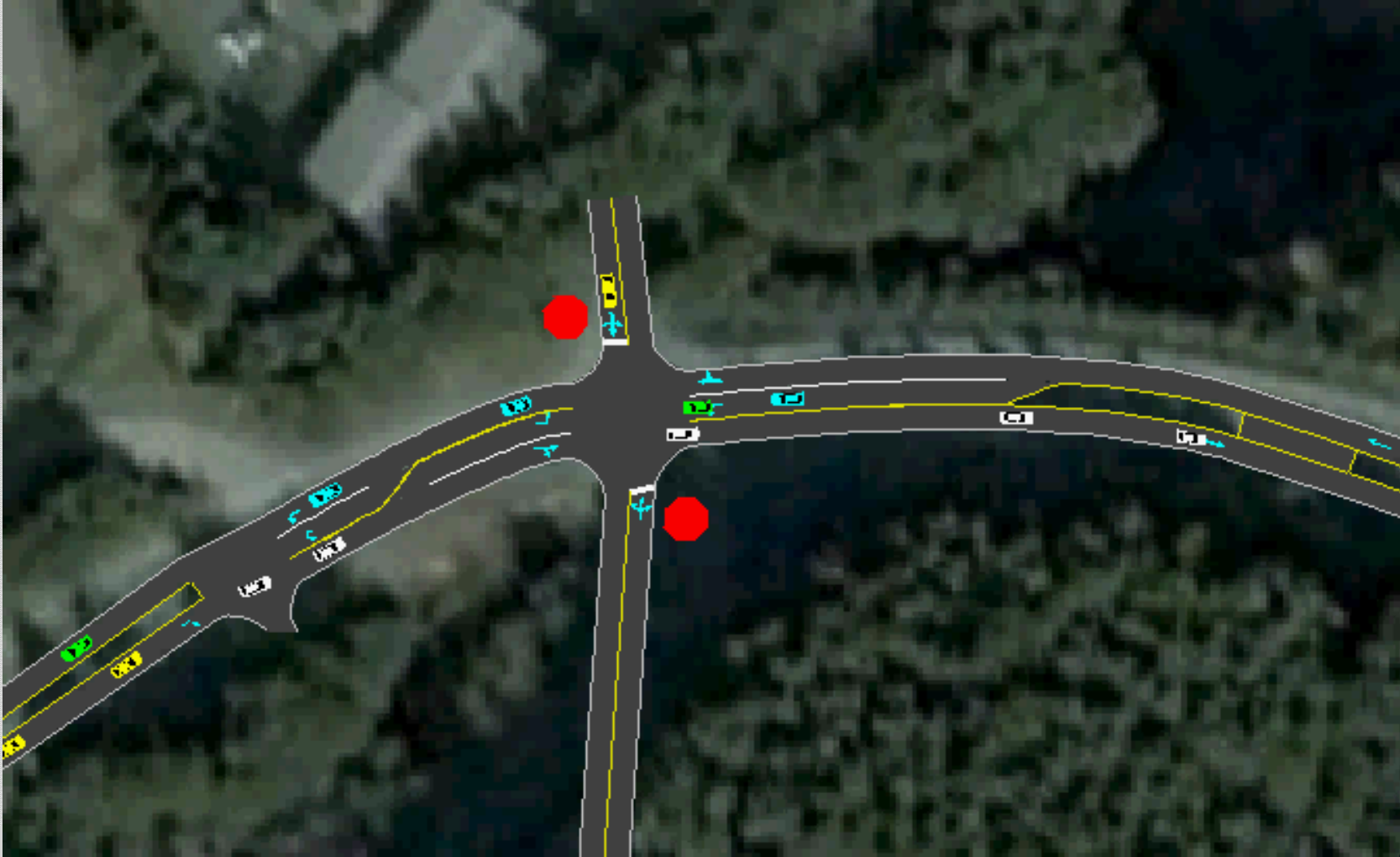
**USKH**



# Fritz Cove Intersection



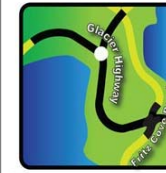
**GLACIER  
HIGHWAY  
IMPROVEMENT  
PROJECTS**



**USKH**



# Auke Bay Lab Curve



GLACIER  
HIGHWAY  
IMPROVEMENT  
PROJECTS



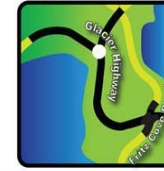
- ▶ What are the problems?
  - Curve does not meet current design standards
    - Radius
    - Superelevation
  - Turning at Lab causes traffic to back up



USKH



# Auke Bay Lab Curve



**GLACIER  
HIGHWAY  
IMPROVEMENT  
PROJECTS**



**ALTERNATIVE 1 - LAB CURVE IMPROVEMENTS**



**USKH**



# Auke Bay Lab Curve



**GLACIER  
HIGHWAY  
IMPROVEMENT  
PROJECTS**



**LAB CURVE PROPOSED IMPROVEMENTS**



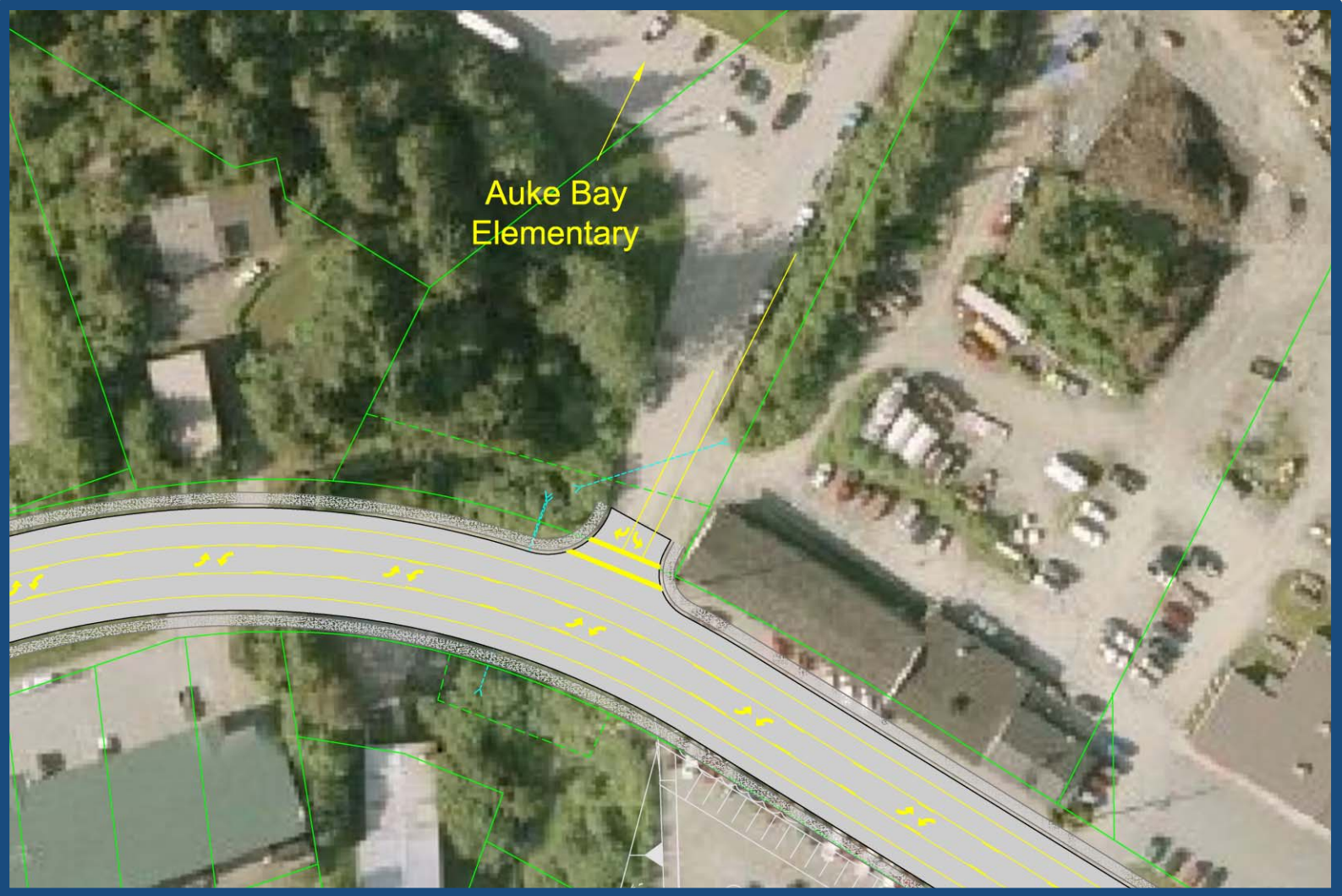
**USKH**



# Improved School Circulation



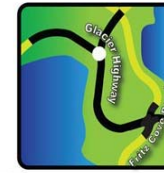
**GLACIER  
HIGHWAY  
IMPROVEMENT  
PROJECTS**



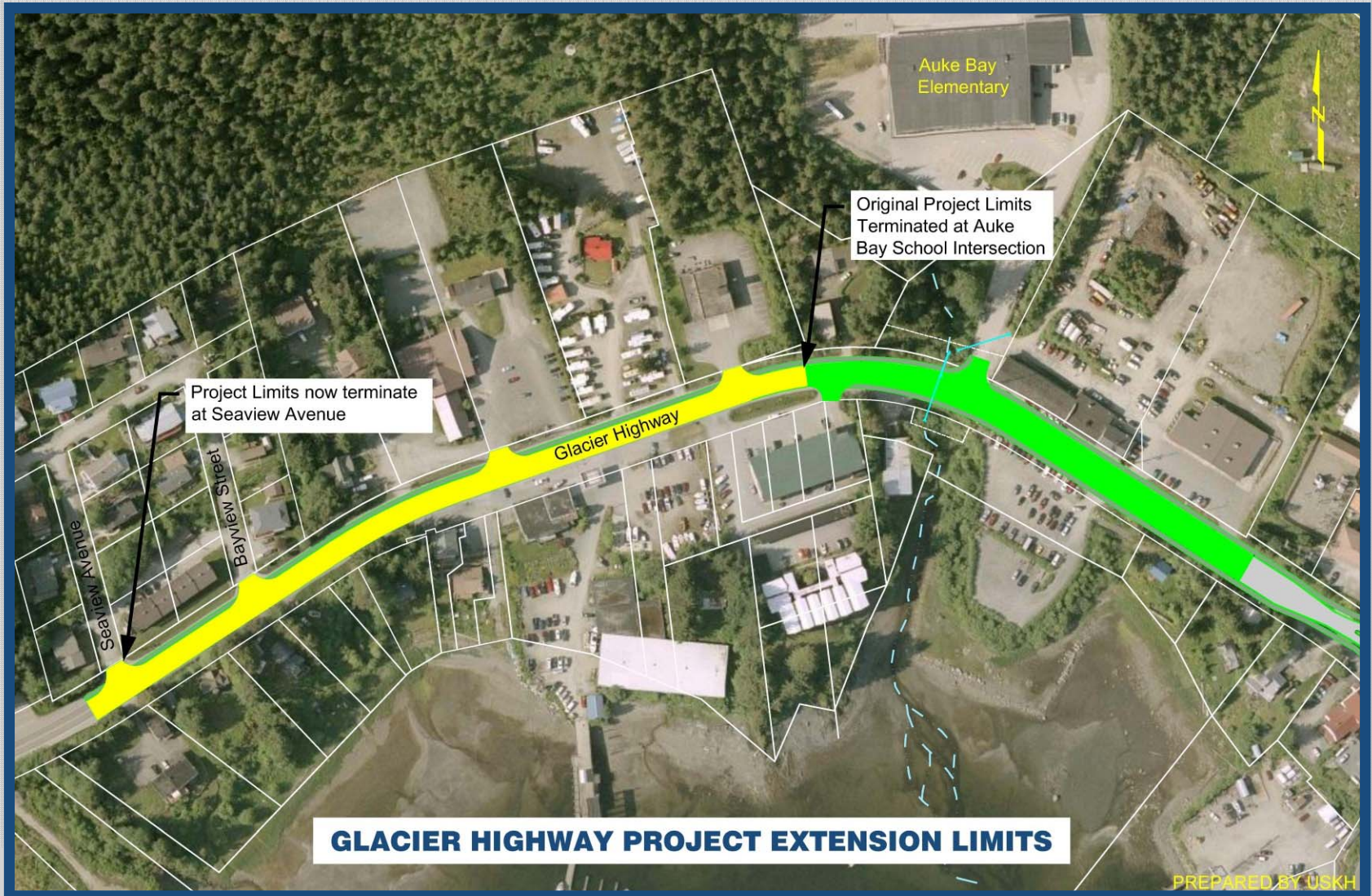
**USKH**



# Project Limits—Extended to Seaview Avenue



**GLACIER  
HIGHWAY  
IMPROVEMENT  
PROJECTS**



PREPARED BY USKH



**USKH**



# Back Loop Road/UAS Intersection



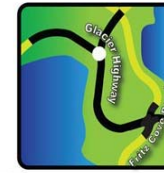
**GLACIER  
HIGHWAY  
IMPROVEMENT  
PROJECTS**



**USKH**



# Back Loop Road Intersection



GLACIER  
HIGHWAY  
IMPROVEMENT  
PROJECTS



- ▶ What are the problems?
  - Above average crash rates
  - Non-standard layout
  - Delay will exceed DOT standards



USKH



# Back Loop Road Roundabout



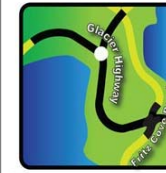
**GLACIER  
HIGHWAY  
IMPROVEMENT  
PROJECTS**



**USKH**



# Back Loop Road Roundabout



GLACIER  
HIGHWAY  
IMPROVEMENT  
PROJECTS

- ▶ How to improve design?
  - Longer, flatter landings to make it safer for pedestrians and vehicles
  - Larger diameter
  - Include access to harbor



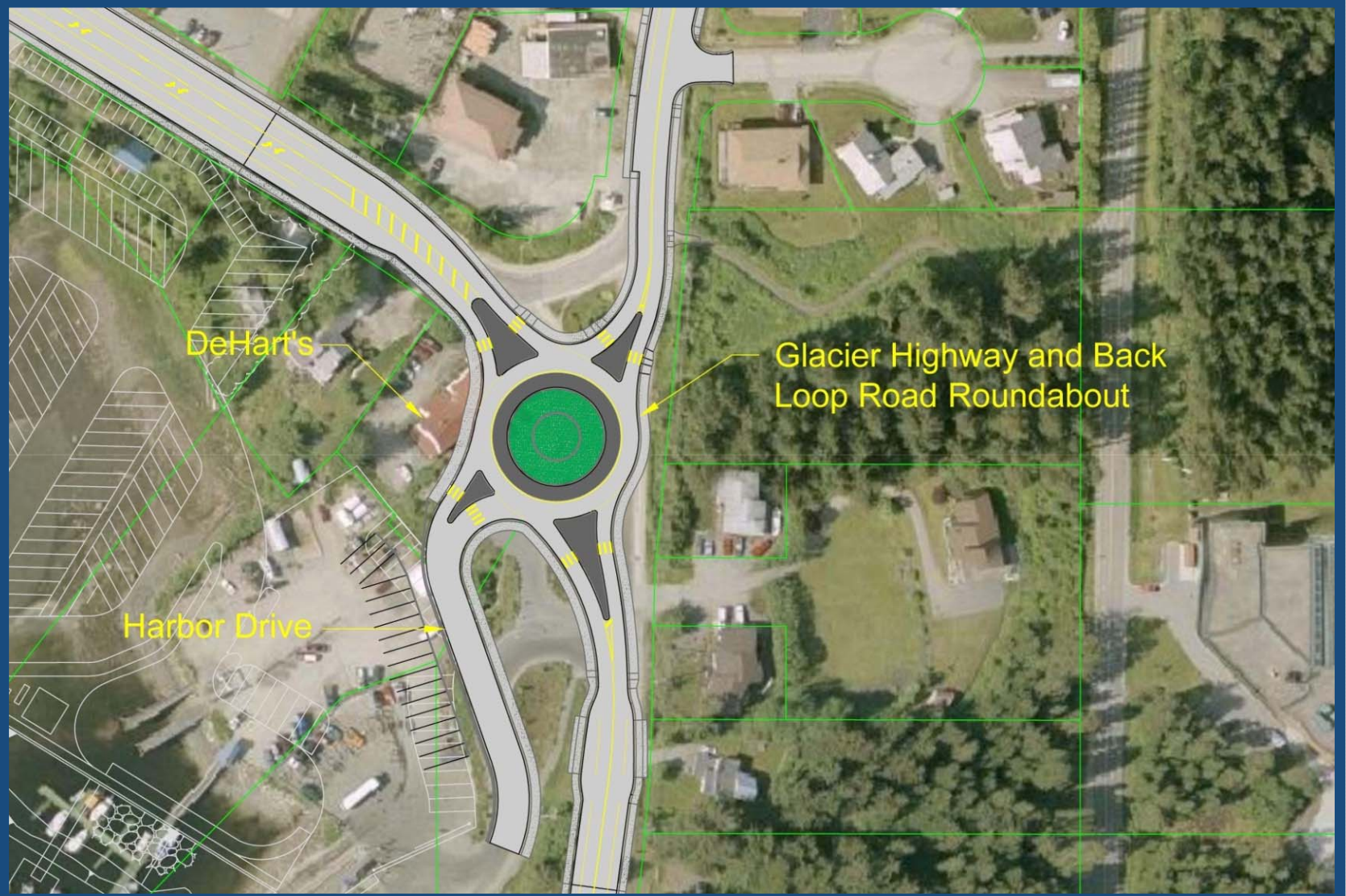
USKH



# Back Loop Road Roundabout



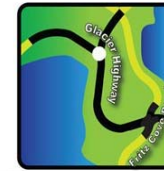
**GLACIER  
HIGHWAY  
IMPROVEMENT  
PROJECTS**



**USKH**



# DeHart's Appraisal & Acquisition



**GLACIER  
HIGHWAY  
IMPROVEMENT  
PROJECTS**

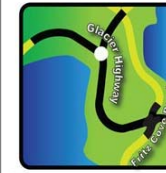
- ▶ DOT&PF has started the appraisal process with property owners
- ▶ Process takes several months
- ▶ Acquisition process is established by law to ensure it is fair to both DOT&PF and the property owner



**USKH**



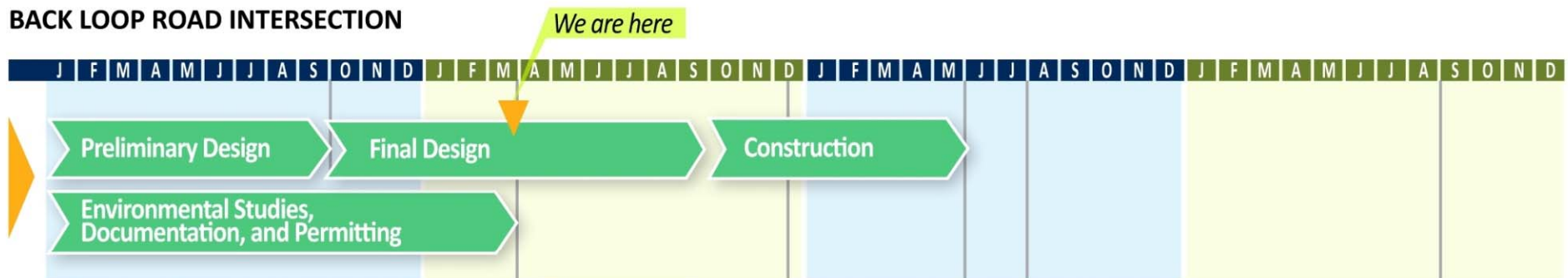
# Schedule



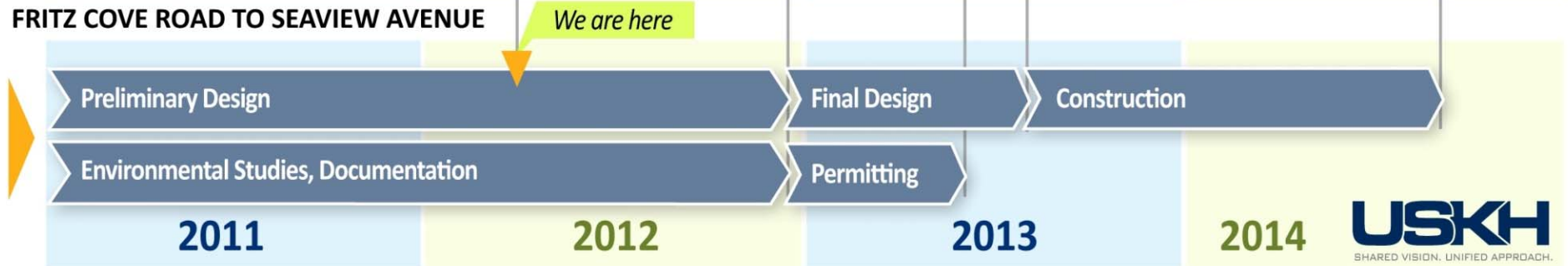
**GLACIER  
HIGHWAY  
IMPROVEMENT  
PROJECTS**

## Project Schedule

### BACK LOOP ROAD INTERSECTION



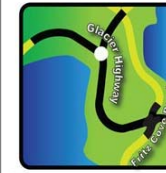
### FRITZ COVE ROAD TO SEAVIEW AVENUE



**USKH**



# Next Steps



**GLACIER  
HIGHWAY  
IMPROVEMENT  
PROJECTS**

- ▶ Consider Public and Agency Input
- ▶ Refine Designs
- ▶ Assemble Environmental Documentation
- ▶ Complete the final designs
- ▶ See DOT&PF website for updates!

[www.dot.state.ak.us](http://www.dot.state.ak.us)

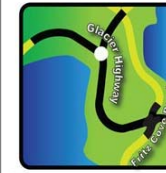
Go to Southeast Region Project Information  
Then click on Auke Bay Corridor Study



**USKH**



# Comments



**GLACIER  
HIGHWAY  
IMPROVEMENT  
PROJECTS**

Greg Lockwood  
DOT&PF Project Manager  
465-2393  
[greg.lockwood@alaska.gov](mailto:greg.lockwood@alaska.gov)

Nathan Leigh  
USKH Project Manager  
790-2901

**Please submit comments by May 12, 2012**  
[glacierhwy@uskh.com](mailto:glacierhwy@uskh.com)



**USKH**





# GLACIER HIGHWAY IMPROVEMENT PROJECTS

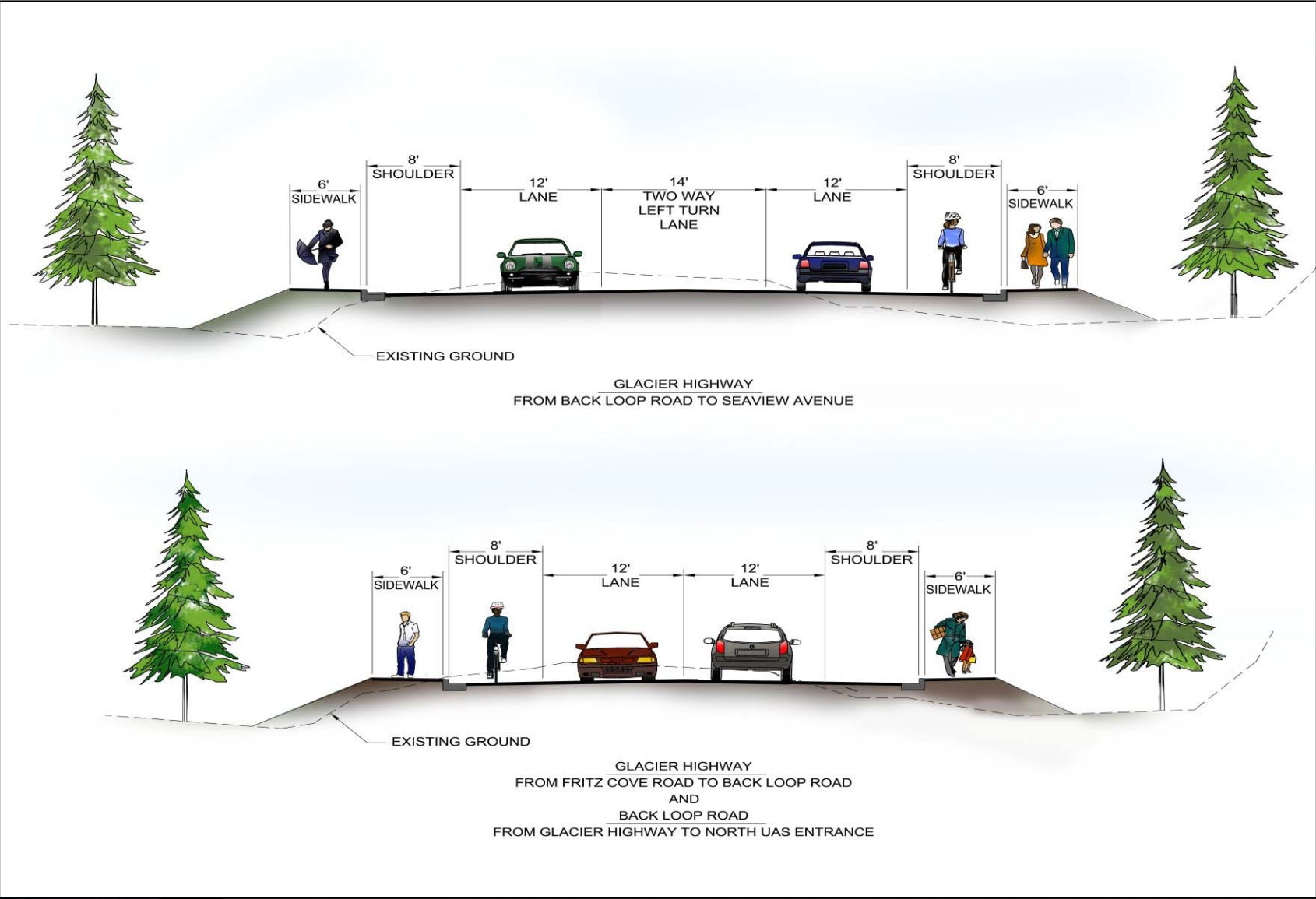




# Proposed Typical Section



**GLACIER  
HIGHWAY  
IMPROVEMENT  
PROJECTS**



**USKH**