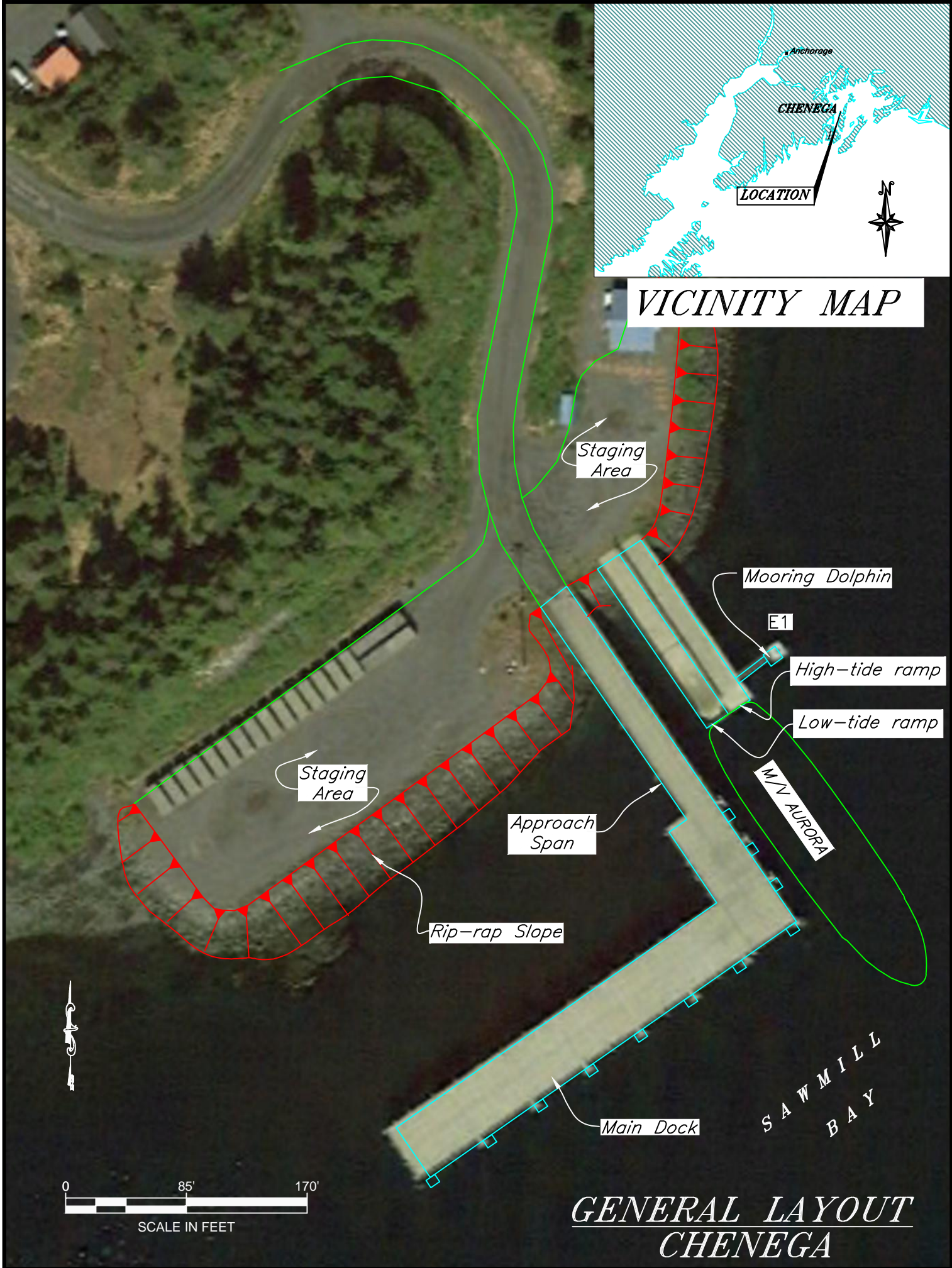


VICINITY MAP

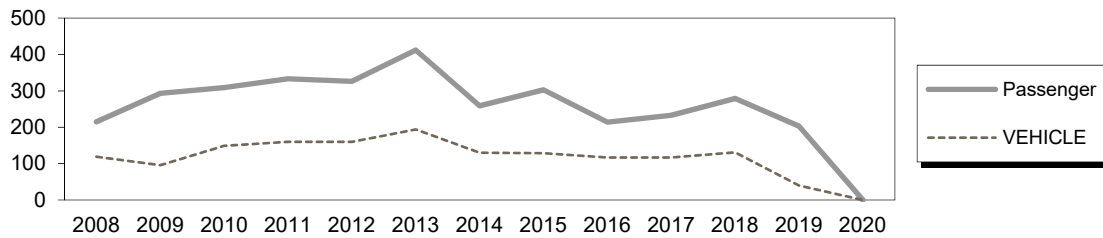


GENERAL LAYOUT CHENEQA

Chenega Dock

Owner: North Pacific Rim Housing Authority
Contact Person: Pete Kompkoff, 907-573-5132

Terminal Description: The Chenega dock and tidal ramps were originally constructed in 1995 to provide a terminal for the BARTLETT. The State of Alaska transferred ownership to the North Pacific Rim Housing Authority (NPRHA) in October, 1998. The Chenega facility consists of an approach, dock and two tidal ramps constructed of prestressed concrete panels welded to bridge beams supported by steel pipe piles socketed to the underlying bedrock. The M/V Tustumena has used the east face of this dock for moorage, while the M/V AURORA uses the tidal ramps located along the north face of the dock for stern loading. The past 12 years of total passenger and vehicle traffic at Chenega is shown below. The global pandemic caused the drop in 2020.



The most recent above water survey and fracture critical inspection occurred on August 13, 2022. The most recent underwater inspection occurred on August 4, 2018.

Vessels	
Name	Berthing, Alignment
Kennicott	Port/Starboard
Aurora	Stem

Tidal Data (MLLW 0.0 feet)	
EHW	15.1
MHHW	12.6
MHW	11.8
ELW	-4.0

Tidal Ramps - Bridge # 185	
Dimensions:	(2) 18' wide x' 131' long
Type:	Concrete Panels/ Steel Box Girders
Year Built:	1995
Shoreward support:	Concrete abutment
Seaward support:	Steel pipe piling
Pile Coating:	Galvanized
Anodes:	No
Lighting:	N/A
Condition:	Satisfactory
Original Design Load:	AASHTO HS-25

Generator & Building
This facility does not have a generator.

Utilities @ Dock
This facility does not have utilities at the dock.

Uplands	
Short-Term Parking:	N/A
Long-Term Parking:	N/A
Staging Area:	N/A
Paint Striping:	No
Driving Surface:	Gravel

Terminal Building
This facility does not have a terminal building.

Dock - Bridge #184	
Dimensions:	(1) 22' x 270' & (1) 41' x 265'
Type:	Concrete Panels/ Steel Box Girders
Year Built:	1995
Support:	Vertical & Battered Steel Pipe Piles
Steel Coating:	Galvanized
Fender Support:	Steel Pin Piles
Fender Face:	12" x 12" Douglas Fir
Anodes:	No
Lighting:	Tall Mast Light in parking lot
Condition:	Satisfactory
Notes:	Red navlight, southeast corner
Original Design Load:	AASHTO HS-25/30 Ton Forklift Axle load/250 psf Uniform Load/40 Ton Mobile Crane w/ Crane Mats Centered on Girders

Dolphins							
Dolphins	Dolphin Piles	Fender Support	Fender Face	Anodes	Built	Cond.	Notes
E1	2B, 1V	-	-	No	1995	Fair	

Catwalks / Gangways								
#	From Struct.	To Struct.	Length / Style / Main Members	Built	Safety Chains	Cond.	Lighting	Notes
C1	TR	E1	25' / Catwalk / Pony Truss	1995	No	Good	None	

Terminal Projects			
Year	Project #	Project Name	Description
1995	N/A	Chenega Dock & Tidal Ramps	Original construction of the dock and tidal ramps, uplands, lighting and electrical installations

GENERAL FACILITY EVALUATION

Facility Component	Rating
Uplands	7
Approach Dock	6
Main Dock	6
Tidal Ramps	6
Fendering System	6

9	EXCELLENT CONDITION
8	VERY GOOD CONDITION - no problems noted
7	GOOD CONDITION - some minor problems.
6	SATISFACTORY CONDITION - structural elements show minor deterioration
5	FAIR CONDITION - all primary structural elements are sound but may have minor corrosion, cracking or chipping. May include minor erosion on bridge piers.
4	POOR CONDITION - advanced corrosion, deterioration, cracking or chipping. Also significant erosion of concrete bridge piers.
3	SERIOUS CONDITION - corrosion, deterioration, cracking and chipping, or erosion of concrete bridge piers have seriously affected deck, superstructure, or substructure. Local failures are possible.
2	CRITICAL CONDITION - advanced deterioration of deck, superstructure, or substructure. May have cracks in steel or concrete, or erosion may have removed substructure support. It may be necessary to close the bridge until corrective action is taken.
1	"IMMINENT" FAILURE CONDITION - major deterioration or corrosion in deck, superstructure, or substructure, or obvious vertical or horizontal movement affecting structure stability. Bridge is closed to traffic but corrective action may put back in light service.
0	FAILED CONDITION - out of service - beyond corrective action
N	Not applicable

For a copy of the latest facility inspection reports contact the AK DOT&PF Marine Design Department. Contact information is located in the Comments and Feedback section.